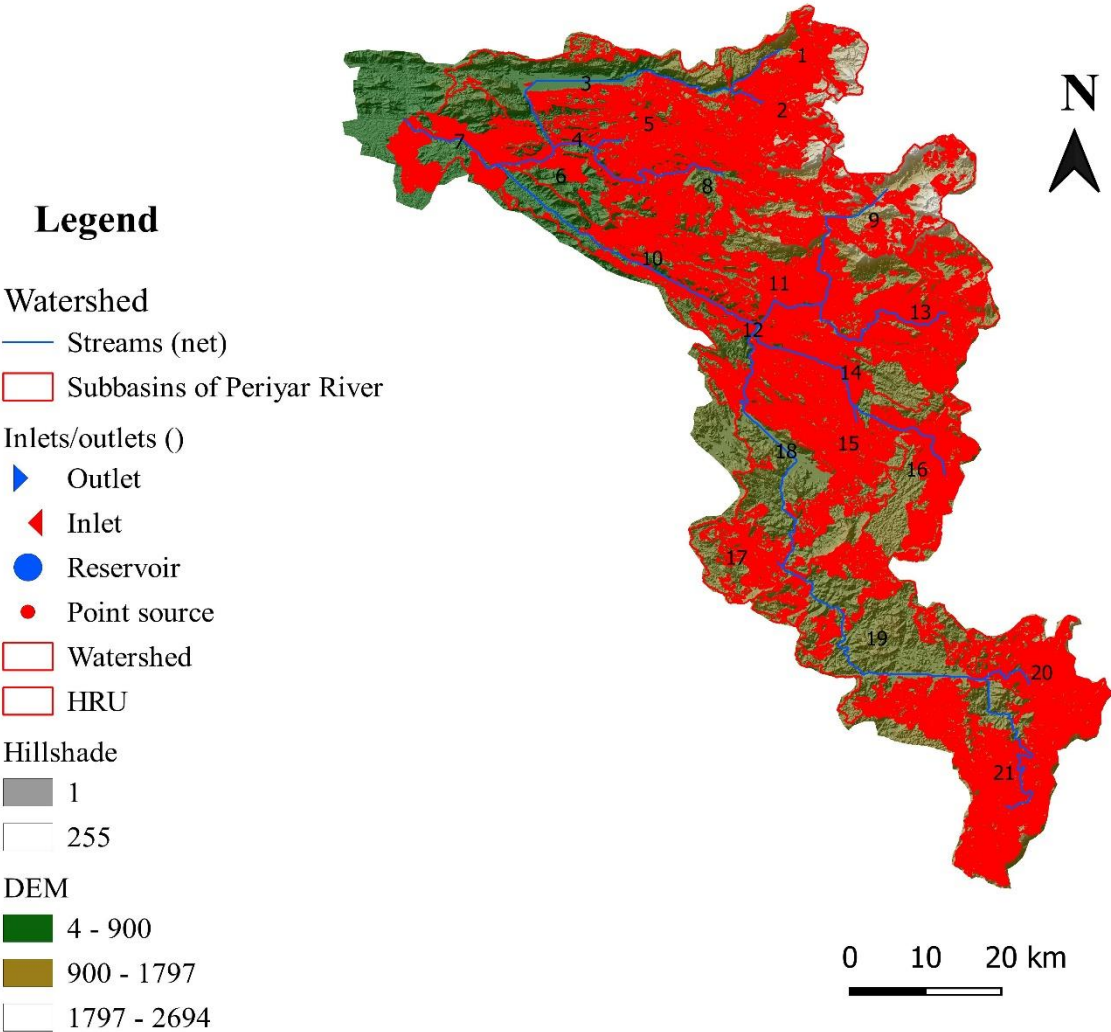


HRU ANALYSIS FOR PERIYAR RIVER BASIN, KERALA, INDIA

MAP DESCRIPTION AND ANALYSIS



Periyar river is a 244 km long, west flowing river, originating from Western Ghats in Tamil Nadu and draining to Arabian sea in the Eranakulam district of Kerala. Its basin size is 5398 km². Recent flood situation in Kerala has resulted in great loss and one of the worst affected region is the Periyar basin.

Simulation:
Length(Years)-11
Warm up (yrs) – 2
HRUs – 34
Sub basins – 21
Output timestep – Monthly
Precipitation method –
Measured
Watershed area – 3863.5 km²

Water balance ratio:
Streamflow/Precipitation:
0.81
Base flow/ Total flow: 0.7
Surface runoff/ total flow:
0.3
Perc/prec. – 0.81
ET/Prec. – 0.81

Total subbasin load:
Flow(cms) – 364.63
Sediment(Mg/yr) – 374196.00



Team Name :KARTEGIS

Topic:Flood Mapping of Periyar Basin

Contact:Akshay Mohan S- lalukmohan66@gmail.com